



# Summer 2010

2 Pandala Rd, Narara NSW 2250

Phone: 4329 4477

Fax: 4329 6832

PO Box 9047 Wyoming NSW 2250 Email: admin@gnnc.com.au

## Inside this issue:

Introduction	1
Centre Activities	1
Services Available	1
Words From Our Customers	2 3
Room Hire Fees	4
How to Contact Us	4
Classifieds	4

## Narara Community Centre Newsletter

Welcome to our Summer 2010

Newsletter!

Spring brought us a lot of rain, and after a wet Winter we 're looking forward to a nice warm Summer (just not too warm!)

We hope all who will be enjoying holidays at this time will stay safe—especially on the roads.

We 're heading into a time of family get-togethers and lots of outdoor activities. Don 't forget to SLIP, SLOP, SLAP when you 're out there!



**Our Centre is available for you to hire for activities and celebrations. See back for Room Hire Rates.**

### CENTRE ACTIVITIES

- Financial Counselling & Budget Planning
- No Interest Loan Scheme
- Various Classes and activities available to the public
- Tax Help (July to October)
- Support Groups
- Information and Referral Service
- Community Projects
- Rooms for Hire
- JP Service available

### Services

#### Financial Counselling

We offer a free Financial Counselling Service at our Community Centre.

The counsellors are also available to see people at Gosford, Umina and Berkeley Vale.

We can help with planning a budget or dealing with creditors. Appointments are necessary:

**Ph 4329 4477**

#### No Interest Loan Scheme

See inside, and on the back page for details of the growth of this great scheme, which helps low income earners. This is a very helpful scheme—especially for people on Centrelink Benefits with limited access to affordable credit.

#### ROOM HIRE

Special Functions  
Celebrations  
Meetings  
Conferences  
Small and large groups  
Disability access  
Lots of parking

#### Educational/Recreational Classes-

Various activities are run at the Centre by private organisers. Phone us for details: we have kids' & teenage dance classes, native orchid society, sewing, quilting, probus clubs, martial arts...to name just a few.  
**Ph 43294477**



## Narara Community Garden Project ...

Sadly we must announce that the Community Garden Project is coming to a close.

We ran some very popular organic gardening courses over a number of years, but those who attended came from all over the coast, and it just wasn't practical for them to keep the garden beds going on a regular basis.

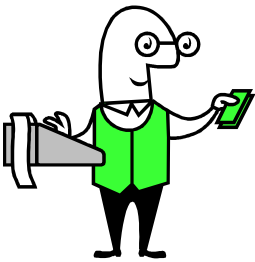
As local residents are mostly living on blocks of land with plenty of room for their own garden, we didn't get much of a response from those who live nearby either.

We will keep applying for funding to run more free courses, but we won't be able to devote any more staff time or funds of our own to try to maintain the garden beds. It was a great idea, but probably not the right location!



## NO INTEREST LOAN SCHEME

If you've been reading our Newsletters you'll be aware that we have a NO INTEREST LOAN SCHEME here at the Centre. If you're not aware of it, we can lend low income earners up to \$1,200 to purchase household goods or services. The loans have no interest or charges, but must be paid back in 12-18 months. No credit history is needed, but you must be 18 years of age, have lived in the Gosford LGA for at least three months and be willing & able to repay the loan. Loan repayments are then recycled to the next borrower!



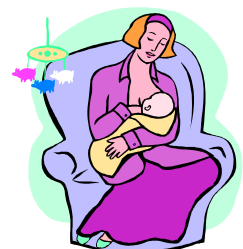
Now we're pleased to say that we have some new funding so that we can employ someone to look for more money to lend out. And there's an opportunity for local residents to get involved in helping people to apply for the loans. If you're looking for some volunteer work, this is a great way to help others and learn new skills.

See the back page for more information.

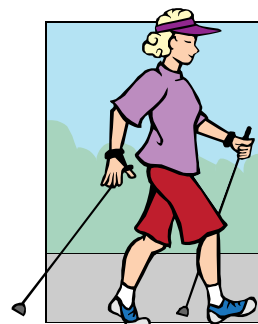
## BREASTFEEDING

Breastfeeding...

- protects your baby from illness and infection
- provides the correct food for your growing baby
- aids the development of your baby's eyesight, speech and intelligence
- promotes a special loving bond between mother and baby



## BRISBANE WATER OUTDOOR CLUB



## EXPRESSIVE SOUL

Expressive Soul offers dance classes to children and teens, giving them the opportunity to express themselves in imaginative and creative ways.

Children are exposed to music from around the world and to poetry, imagery, props and dance games.

Dance elements are taught and explored so that children have tools to construct movement pieces and move in meaningful ways.

No dance experience is required to start. Boys and girls welcome.

An Expressive Soul class meets at Narara Community Centre at 4.30pm on Tuesdays during school term.

If you'd like to know more, please ring **Elise on 0410 189 534**



## LITTLE KICKERS





## To contact us:

### Narara Community Centre

2-12 Pandala Road  
Narara NSW 2250

PO Box 9047  
Wyoming NSW 2250

Phone: 4329 4477  
Fax: 4329 6832  
Email: admin@gnnc.com.au

OFFICE HOURS 9AM-4PM Monday to  
Thursday

## ROOM HIRE FEES

1. Hall
2. Meeting Room
3. Youth/Craft Area
4. Office Space
5. Kitchen

### Schedule of Fees and Charges (inc GST)\*

	Community DAY	Private DAY	Community EVENING	Private EVENING
<b>1</b>	\$17.60p/h	\$22.00p/h	\$33.00p/h	\$44.00p/h
<b>2</b>	\$8.80p/h	\$11.00p/h	\$18.70p/h	\$22.00p/h
<b>3</b>	\$8.80p/h	\$11.00p/h	\$14.30p/h	\$16.50p/h
<b>4</b>	\$110.00/\$165 Per week	N/A	N/A	N/A
<b>5</b>	\$6.05p/h	\$8.25p/h	\$6.05p/h	\$8.25p/h

\*Private Functions will be charged a flat rate of \$330 Fri/Sat nights  
BOND: Community \$110 Private: \$330/\$550  
NO BIRTHDAY PARTIES 13—21 years

## VOLUNTEERS NEEDED!

### An opportunity to participate, meet people and develop your skills!

Narara Community Centre is seeking local people who are willing to put in a few hours a week to be a Volunteer at the Centre helping out with our **No Interest Loan Scheme**, starting in early 2011.

If you have some time on your hands, want to help your local community, want to learn new skills, want to meet people or want to find a registered Centre for your Centrelink mutual obligation, we may be the place for you.

No previous qualifications or experience are necessary, but you must have good people skills and be willing to do necessary computer data entry.

On-the job training and support will be provided.

Please call **4329 4477** between 9am - 4pm Monday to Thursday for more details, or to register your interest.



This could be you!